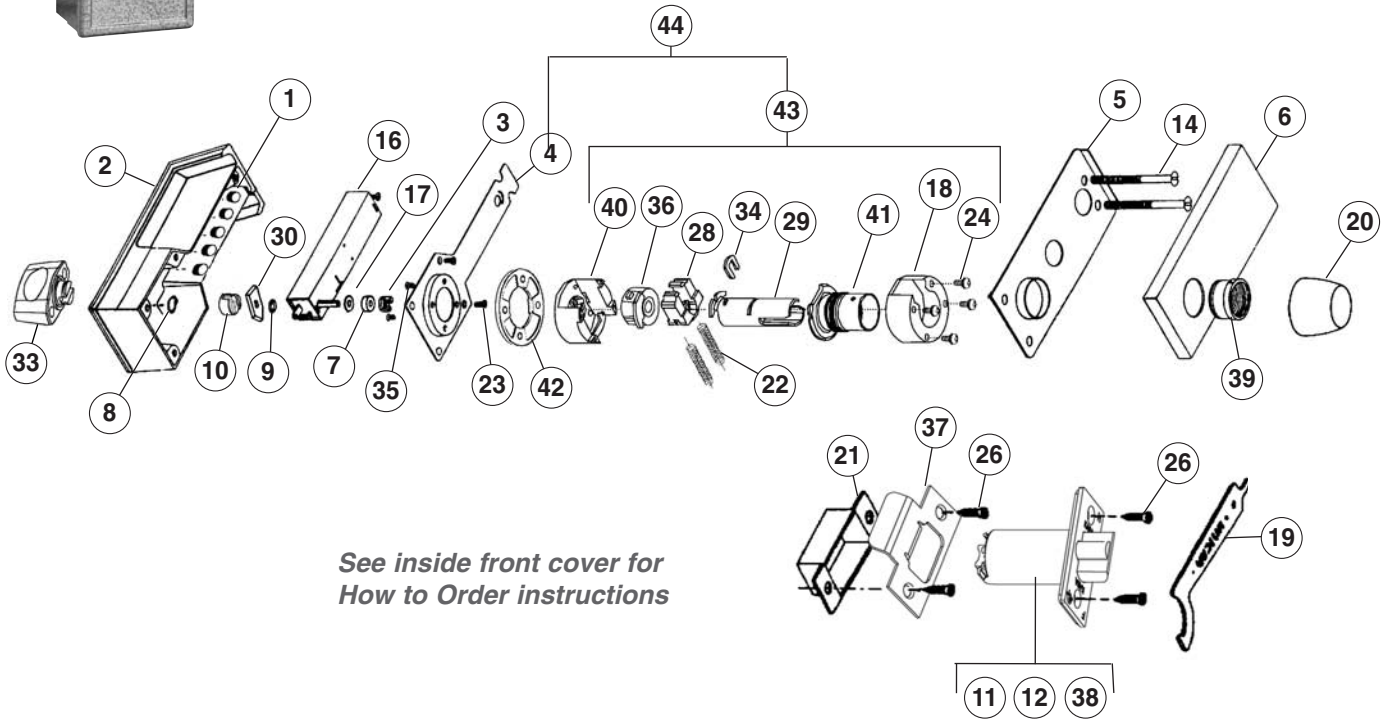


Simplex 6200 Series



See inside front cover for
How to Order instructions

Item	Qty/Lock	Description	Finish	Part Number	List Prices (USD)
1	5	Pushbuttons (10 pack)	Black	34019-106-10	\$11.00
2	1	Front Lock Housing	Gold Tone	55001-060-01	\$77.00
			Almond	55001-067-01	\$77.00
			Black	55001-085-01	\$77.00
			Grey	55001-086-01	\$77.00
3	1	Drive Hub Kit (Includes 1 ea #3, #17; 2 pcs #7)		64772-000-01	\$10.00
4	1	Back Plate Sub-assembly (Old # 55095)		55044-000-01	\$27.00
5	1	Inside Door Reinforcing Plate		55057-000-01	\$9.00
6	1	Inside Trim Plate	Satin Chrome	55060-26D-01	\$11.00
			Bright Brass	55060-03-01	\$11.00
7	1	Spacer (For Drive Hub) Kit (Includes 1 ea #3, #17; 2 pcs #7)		64772-000-01	\$10.00
8	1	Retainer Ring for Turn Knob (10 pack)		55080-000-10	\$10.00
9	1	Stop Arm Washer (Includes 1 ea #9, #16, #30)		74870-000-01	\$84.00
10	1	Force Proof Clutch Assembly		55091-000-01	\$28.00
11	1	Latch 1/2" (13 mm) Throw; 2 3/8" (60 mm) Backset; Flat Front	Satin Chrome	55115-26D-01	\$29.00
			Bright Brass	55115-03-01	\$29.00
12	1	Latch 1/2" (13 mm) Throw; 2 3/4" (70 mm) Backset; Flat Front	Satin Chrome	55116-26D-01	\$29.00
			Bright Brass	55116-03-01	\$29.00
14	2	Mounting Screw 1/4" x 20 NC (2 screws x 2 sizes) for Doors 1 3/8" - 2 1/4"	Satin Chrome	55300-26D-01	\$22.00
			Bright Brass	55300-03-01	\$22.00
15	1	Accessory Kits (For Lock Installation) (Not shown in Exploded View)	Satin Chrome	55300-26D-01	\$22.00
			Bright Brass	55300-03-01	\$22.00
16	1	Combination Chamber (M64) (Includes 1 ea #9, #16, #30) (Old # 55013-000-01)		74870-000-01	\$84.00

6200 Series (continued)

Item	Qty/Lock	Description	Finish	Part Number	List Prices (USD)
17	1	Shaft Bushing (Includes 1 ea #3, #17; 2 ea #7)		64772-000-01	\$10.00
18	1	Cover for Shoe Housing		201277-000-01	\$9.00
19	1	Installation Wrench (Spanner Wrench)		201278-000-01	\$9.00
20	1	Inside Knob (Old # 55073) or 201284	Satin Chrome	34264-26D-01	\$40.00
			Bright Brass	34264-03-01	\$40.00
21	1	Strike Box (Old # 55068-000-01)		201287-000-01	\$8.00
22	2	Shoe Spring (10 pack)		201366-000-10	\$9.00
23	4	Sems Screw Phillips 6 - 32 x 1/4" (6 mm) R.H.M.S. (For shoe housing cover) (10 pack)		201446-000-10	\$7.00
24	4	Sems Screw Phillips 8 - 32 x 7/16" (11 mm) R.H.M.S. (For spacer)	Satin Chrome	204210-26D-01	\$10.00
			Bright Brass	204210-03-01	\$10.00
25	4	Sems Screw Phillips 8 - 32 x 11/16" (11 mm) R.H.M.S. (For spacer)	Satin Chrome	204210-26D-01	\$10.00
			Bright Brass	204210-03-01	\$10.00
26	4	Combination Screw; Phillips 8 - 32 x 3/4" (19 mm) (For Latch & Strike) (10 pack)	Satin Chrome	201565-26D-10	\$10.00
			Bright Brass	201565-03-10	\$10.00
			Antique Brass	201565-05-10	\$10.00
27	1	Rubber Bumper (For Door Frame) (Not Shown on Exploded View)		201568-000-05	\$10.00
28	1	Retractor Shoe (old # 201272)		201723-000-01	\$10.00
29	1	Inside Drive Sleeve Assembly (Includes 1 ea #29, #34)		201782-000-01	\$13.00
30	1	Stop Arm (Includes 1 ea #9, #16, #30)		74870-000-01	\$84.00
31	2	Sems Screw Phillips 6 - 32 x 5/16" (8 mm) R.H.M.S. (For combination chamber) (Old Part # 201447-000-10)		64776-000-01	\$10.00
32	2	Sems Screw Phillips 6 - 32 x 3/8" (10 mm) F.H.M.S. (For back plate) (Old Part # 201444-000-10)		64776-000-01	\$10.00
33	1	Turn Knob Assembly (Old # 55128) (Includes 1 ea #8, #33)		202014-060-01	\$22.00
				202014-067-01	\$22.00
				202014-085-01	\$22.00
				202014-086-01	\$22.00
34	1	Retainer Clip (For Inside Knob) (Old # 201344)		204120-000-05	\$10.00
35	4	Sems Screw Phillips 8 - 32 x 5/16" (5 mm) R.H.M.S. (For spacer) (old # 201449)	Satin Chrome	204210-26D-01	\$10.00
			Bright Brass	204210-03-01	\$10.00
36	1	Drive Insert (Old # 55077)		204138-000-01	\$21.00
37	1	Strike Plate (old # 201288)	Satin Chrome	204227-26D-01	\$9.00
			Bright Brass	204227-03-01	\$10.00
38	1	Latch 1/2" (13 mm) Throw; 2 3/4" (70 mm) Backset; Floating Front	Satin Chrome	204168-26D-41	\$31.00
			Bright Brass	204168-03-41	\$31.00
39	1	Rose Bushing / Thread Ring Privacy Locks	Satin Chrome	204169-26D-01	\$11.00
			Bright Brass	204169-03-01	\$11.00
40	1	Shoe Retainer and Bridge Assembly		204199-000-01	\$33.00
41	1	Shoe Retainer Cap Assembly	Satin Chrome	204200-26D-01	\$27.00
			Bright Brass	204200-03-01	\$27.00
42	1	1/4" Spacer, Door Thickness	Satin Chrome	204210-26D-01	\$10.00
			Bright Brass	204210-03-01	\$10.00
43	1	Cylindrical Drive Unit Assembly (Includes 1 ea #18, #28, #29, #34, #36, #40, #41; 2 ea #22; 4 ea #24)	Satin Chrome	204206-26D-01	\$94.00
			Bright Brass	204206-03-01	\$94.00
44	1	Back Plate Assembly (Includes 1 ea #4, #24, #42, #43)	Satin Chrome	204207-26D-01	\$96.00
			Bright Brass	204207-03-01	\$96.00
45	1	Lubriplate Aero Grease Tubes		64754-000-01	\$12.00

Note: Lubriplate Aero grease is the "only" lubricant that should be used.